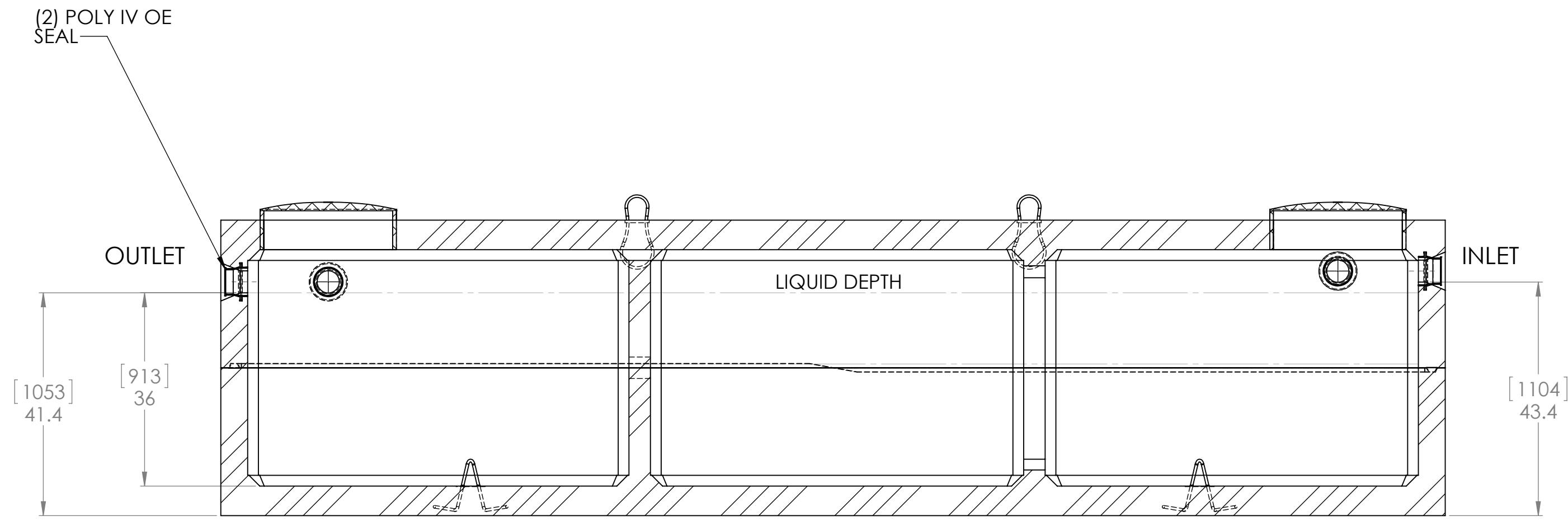
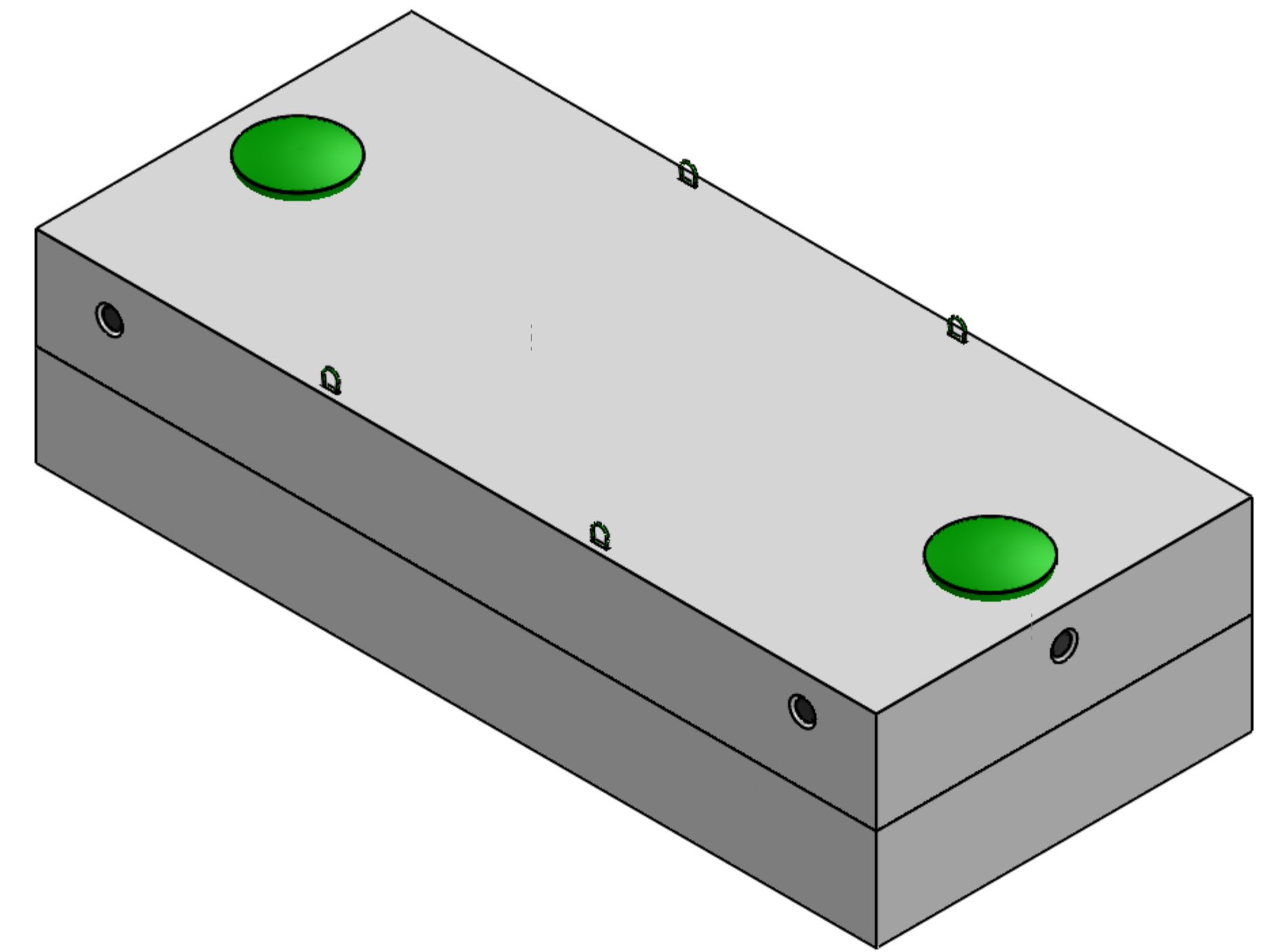


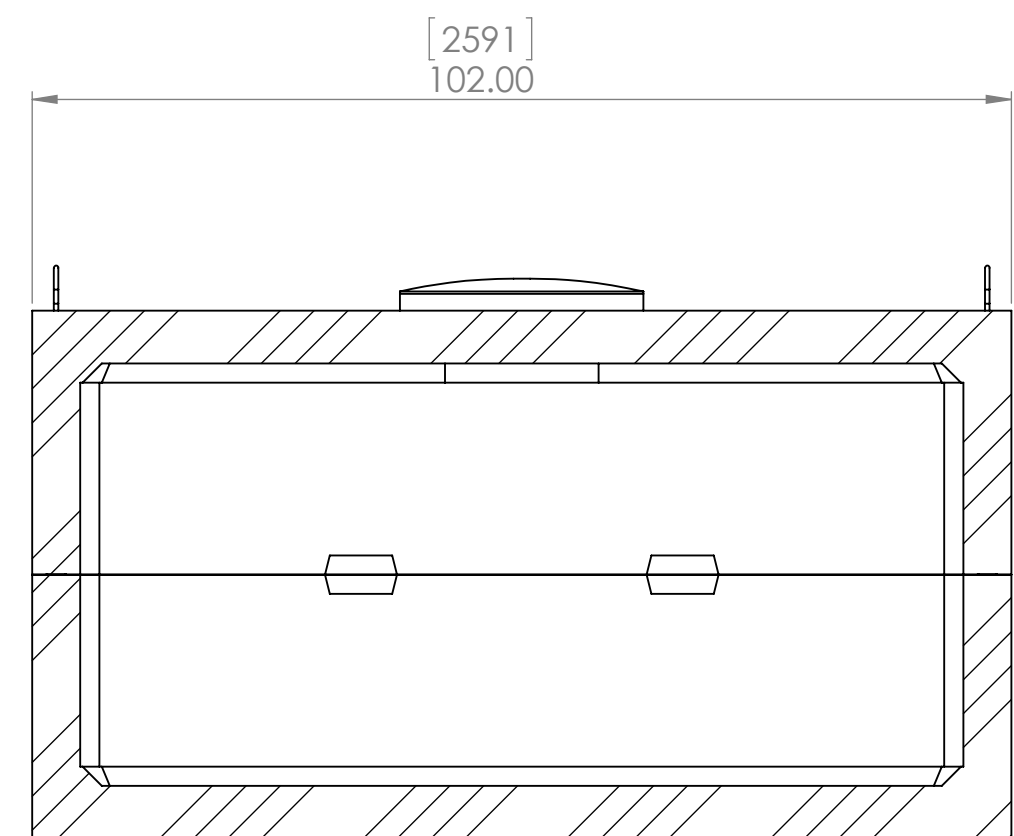
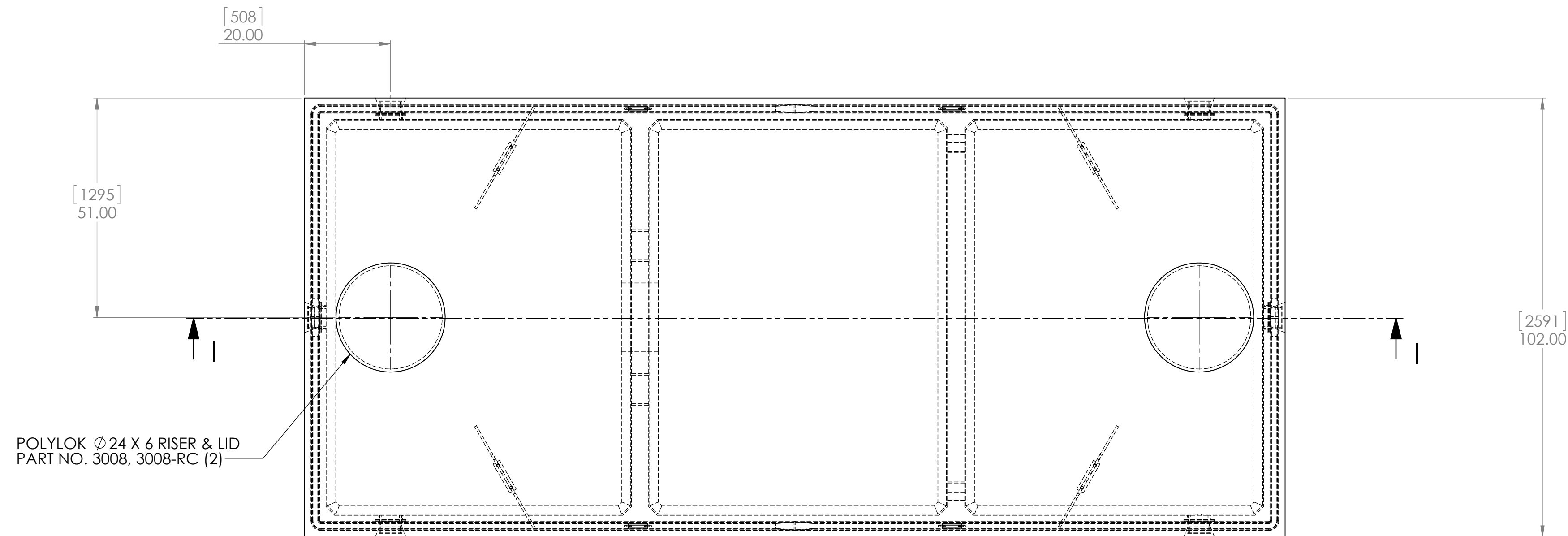
NOTE:
 MATERIAL: CONCRETE 32MPa @ 28DAYS, NON-SULFATE
 AIR ENTRAINMENT: 5-7%
 REINFORCEMENT: CSA CAN A23.1
 CONSTRUCTION: MEETS CSA B66-05
 TOTAL WEIGHT: 14842 kg (32722bs)
 TOTAL VOLUME: 14008 L (3081 Imp. Gal.)
 SEPTIC CHAMBER VOLUME: 7664 L (1686 Imp. Gal.)
 EFFLUENT CHAMBER VOLUME: 3836 L (844 Imp. Gal.)
 WORKING VOLUME: 11500 L (2530 Imp. Gal.) @ 36" LIQUID DEPTH
 INLET/OUTLET: CAST-IN ϕ 102.00 (ϕ 4.00") PIPE SEAL
 INLET BAFFLE: ϕ 102.00 (ϕ 4.00) PVC
 OUTLET BAFFLE/FILTER: POLYLOK PL-250 OR EQUIVALENT
 JOINT: MASTIC ROPE SEALANT
 ASSEMBLY: ON-SITE
 MAX. BURIAL DEPTH: 2.0M (78.7 in)
 DIMENSIONS: INCHES



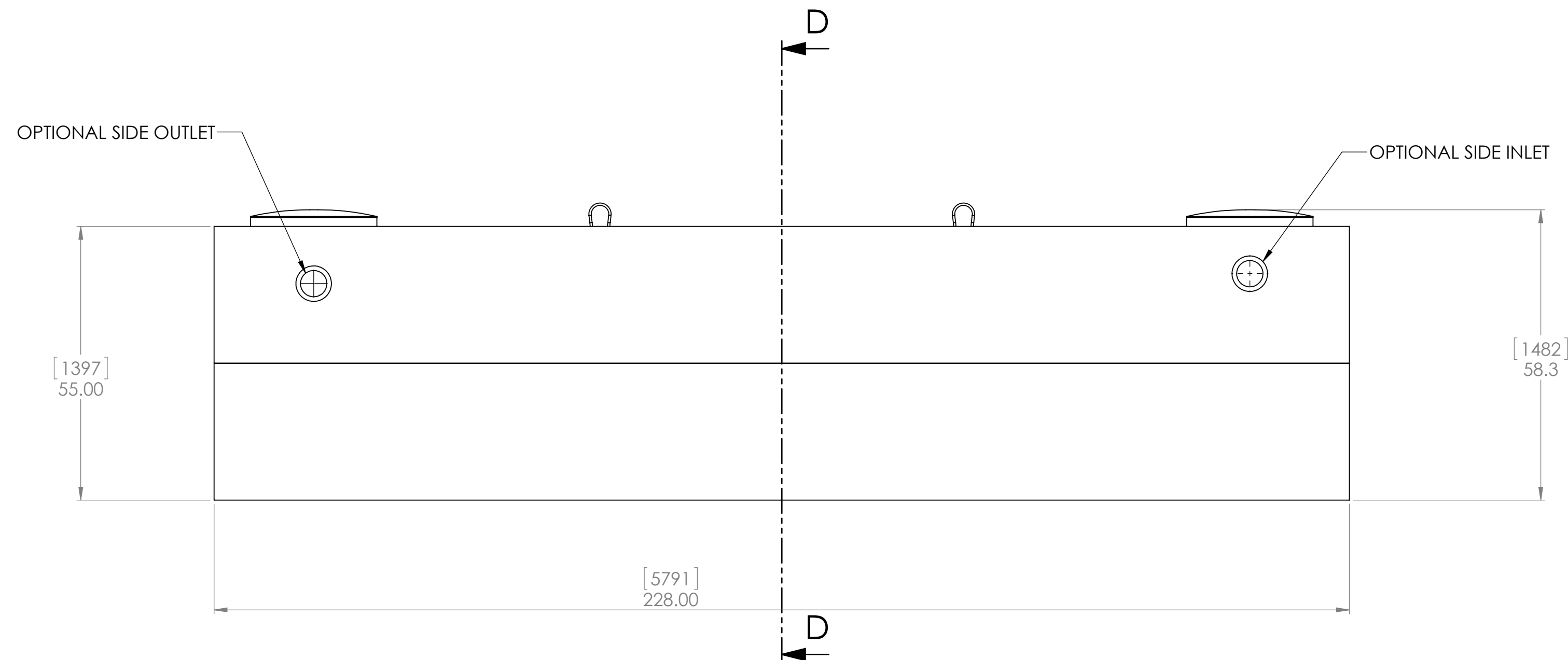
SECTION H-H



SCALE 1:25



SECTION D-D



PROPRIETARY AND CONFIDENTIAL
 THE INFORMATION CONTAINED IN THIS
 DRAWING IS THE SOLE PROPERTY OF
 REID'S PRECAST CEMENT PRODUCTS LTD.
 REPRODUCTION IN PART OR AS A WHOLE
 WITHOUT THE WRITTEN PERMISSION OF
 REID'S PRECAST CEMENT PRODUCTS LTD.
 IS PROHIBITED.

UNLESS OTHERWISE SPECIFIED:		NAME	DATE	REID'S PRECAST CEMENT PRODUCTS LTD LANGTON, ONTARIO, CANADA 519 875-2121
DRAWN				
CHECKED				2500 IMP. GALLON LOW PROFILE SEPTIC TANK ASSEMBLY
ENG APPR.				SIZE DWG. NO.
MFG APPR.				D RP-2500LP-ST
				SCALE: 1:20 WEIGHT:
				SHEET 1 OF 1
				REV
				A