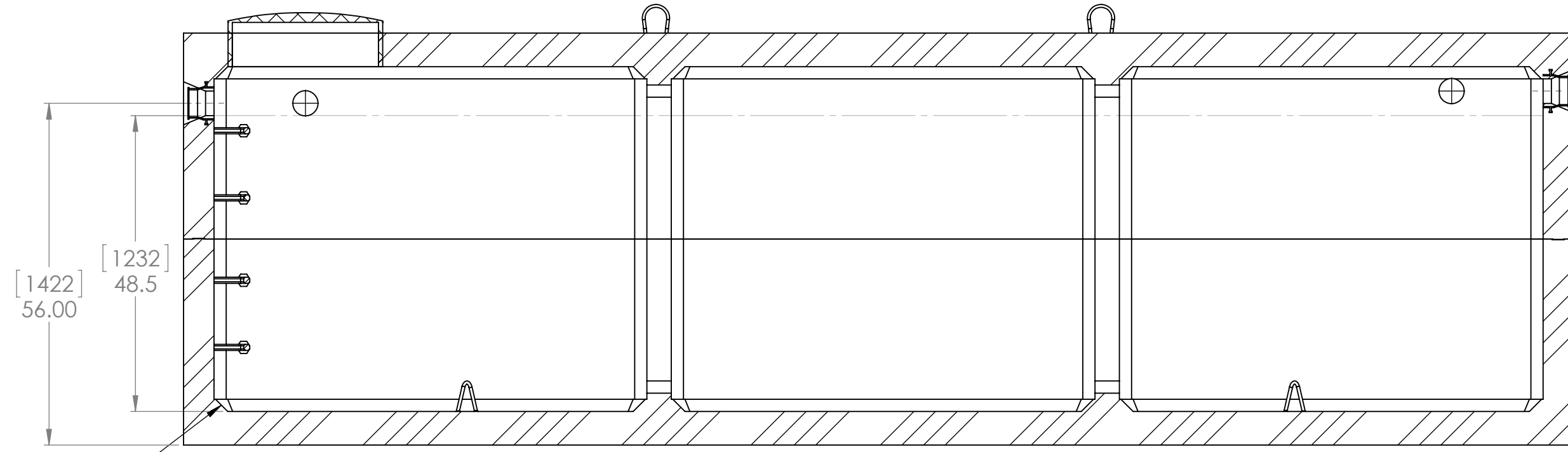


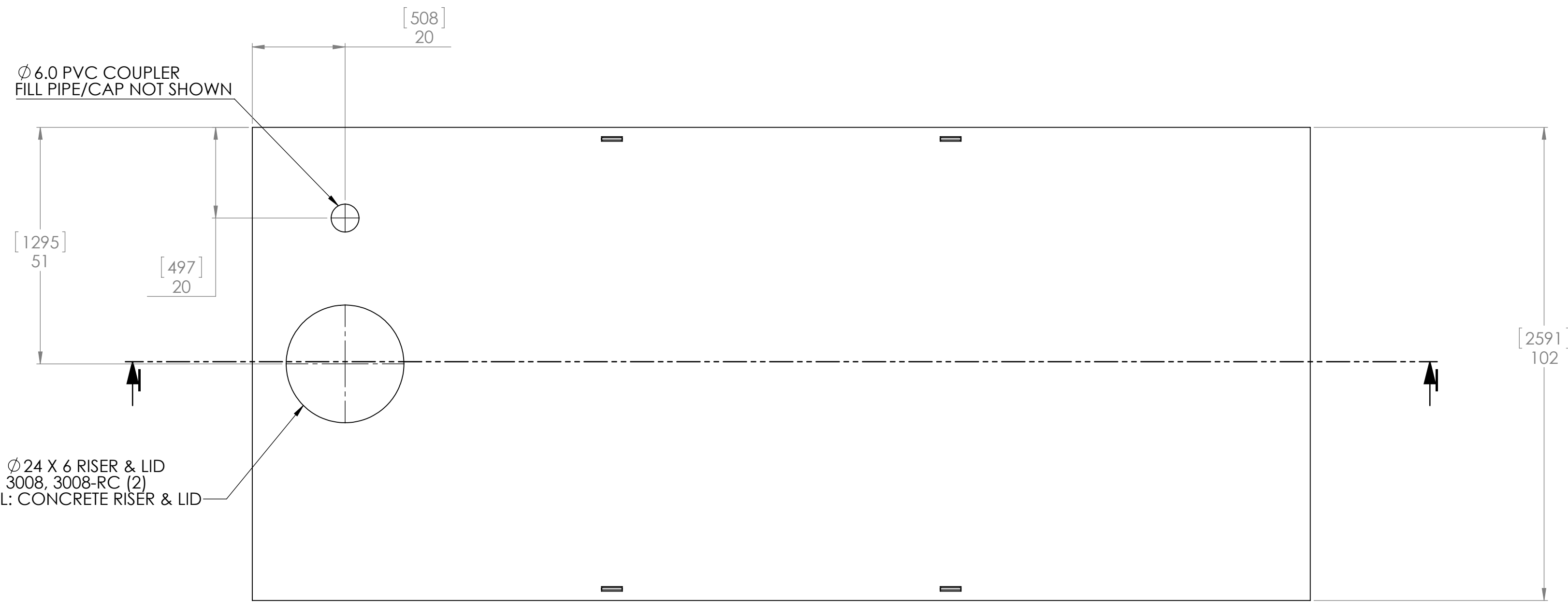
NOTE:

MATERIAL: CONCRETE 32MPa @ 28DAYS, NON-SULFATE
 AIR ENTRAINMENT: 5-7%
 REINFORCEMENT: CSA CAN A23.1
 CONSTRUCTION: MEETS CSA B66-05
 TOTAL WEIGHT: 16550 kg (36487 lbs)
 TOTAL VOLUME: 18336 L (4033 Imp. Gal.)
 SEPTIC CHAMBER VOLUME: N/A
 EFFLUENT CHAMBER VOLUME: N/A
 WORKING VOLUME: 15793 L (3474 Imp. Gal.) @ 48.5" LIQUID DEPTH
 INLET/OUTLET: CAST-IN Ø 102.00 (Ø 4.00") PIPE SEAL
 INLET BAFFLE: N/A
 OUTLET BAFFLE/FILTER: N/A
 JOINT: MASTIC ROPE SEALANT
 ASSEMBLY: ON-SITE
 MAX. BURIAL DEPTH: 2M (78 INCHES)
 DIMENSIONS: INCHES/MM



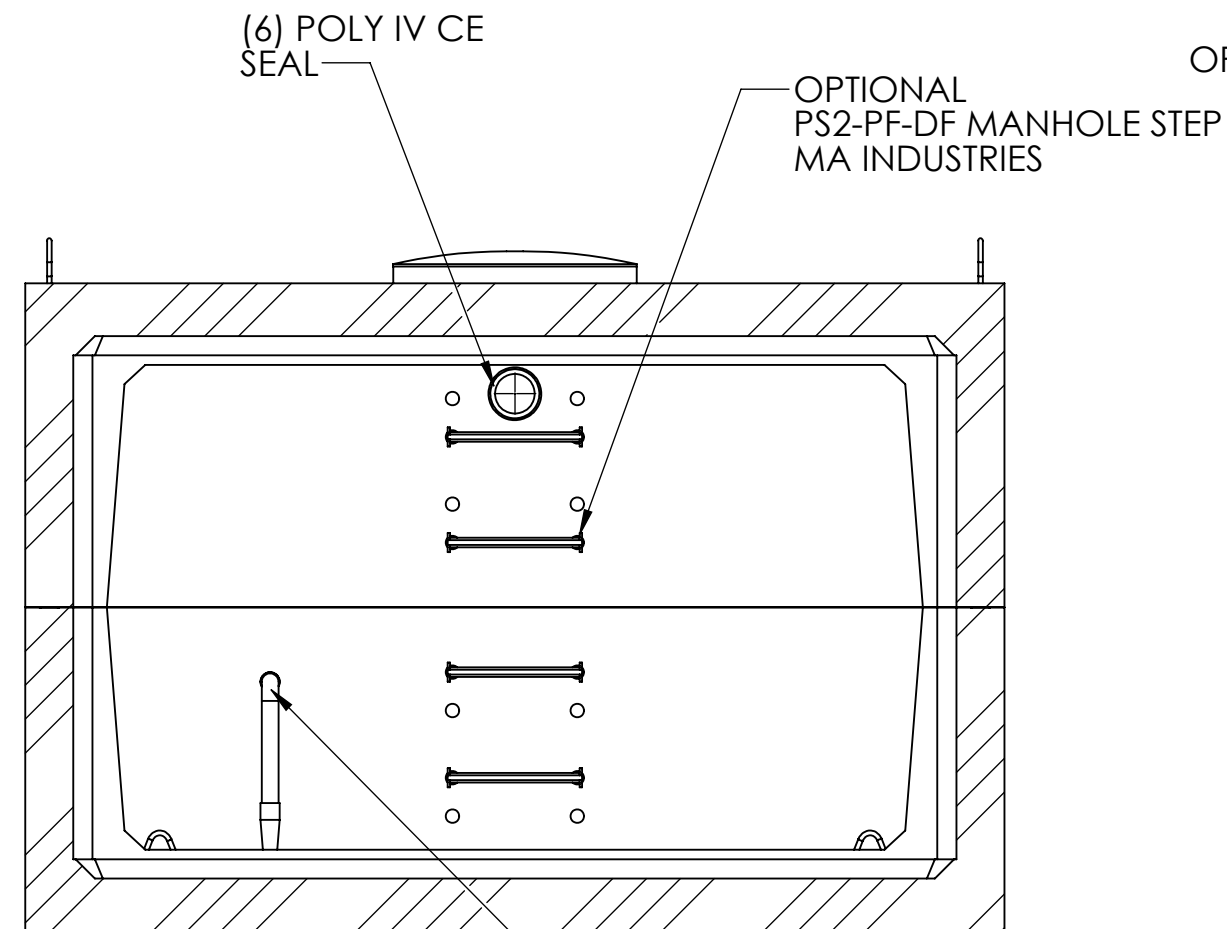
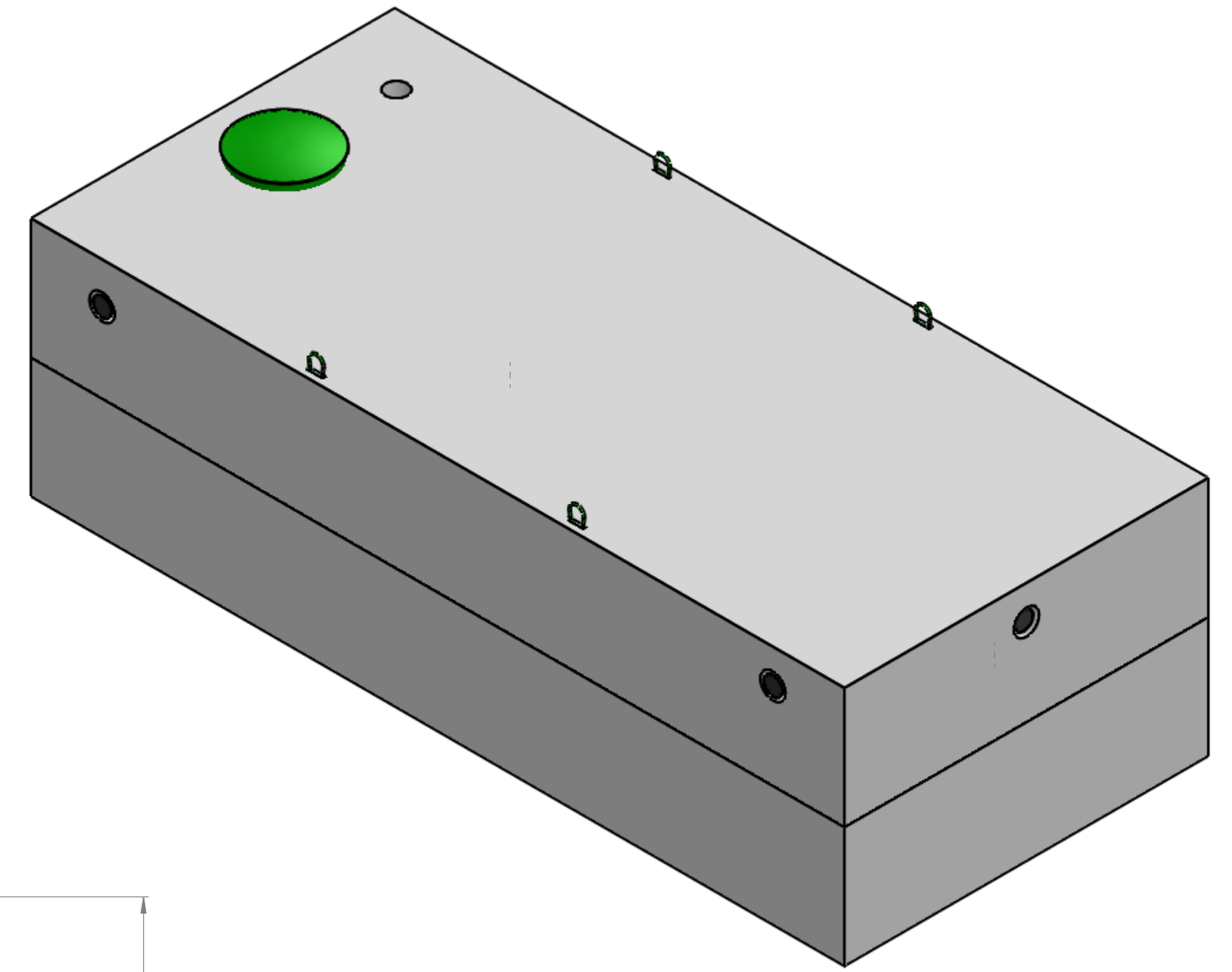
2 x 2 CHAM.

SECTION H

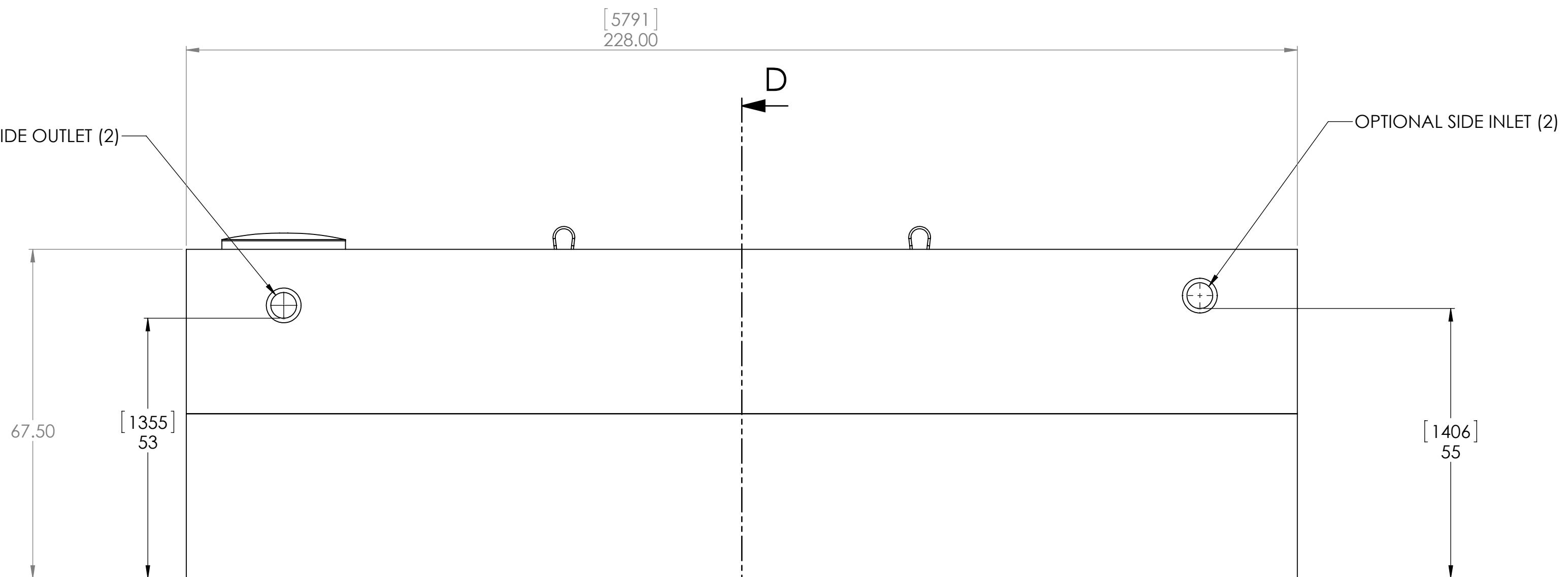


POLYLOK Ø 24 X 6 RISER & LID
 PART NO. 3008, 3008-RC (2)
 OPTIONAL: CONCRETE RISER & LID

SCALE 1 : 25



SECTION D-D



(6) POLY IV CE SEAL

OPTIONAL PS2-PF-DF MANHOLE STEP
 MA INDUSTRIES

Ø 1.25 PVC/BRASS DRAW
 TUBE & FOOT VALVE
 ASSEMBLY

PROPRIETARY AND CONFIDENTIAL
 THE INFORMATION CONTAINED IN THIS
 DRAWING IS THE SOLE PROPERTY OF
 REID'S PRECAST CEMENT PRODUCTS LTD.
 REPRODUCTION IN PART OR AS A WHOLE
 WITHOUT THE WRITTEN PERMISSION OF
 REID'S PRECAST CEMENT PRODUCTS LTD.
 IS PROHIBITED.

UNLESS OTHERWISE SPECIFIED:		NAME	DATE	REID'S PRECAST CEMENT PRODUCTS LTD LANGTON, ONTARIO, CANADA 519 875-2121		
DIMENSIONS ARE IN INCHES	TOLERANCES:	DRAWN			TITLE: (18336L) 4000 IMP. GALLON WATER CISTERN & HOLDING TANK	
FRACTIONAL ±	ANGULAR MATCH ±	CHECKED				
TWO PLACE DECIMAL ±	BEND ±	ENG APPR.				
THREE PLACE DECIMAL ±		MFG APPR.				
	INTERPRET GEOMETRIC TOLERANCING PER:	G.A.		SIZE DWG. NO. D RP-4000-C		
	MATERIAL	COMMENTS:			REV A	
NEXT ASSY	USED ON	FINISH		SCALE: 1:20	WEIGHT:	SHEET 1 OF 1
APPLICATION						