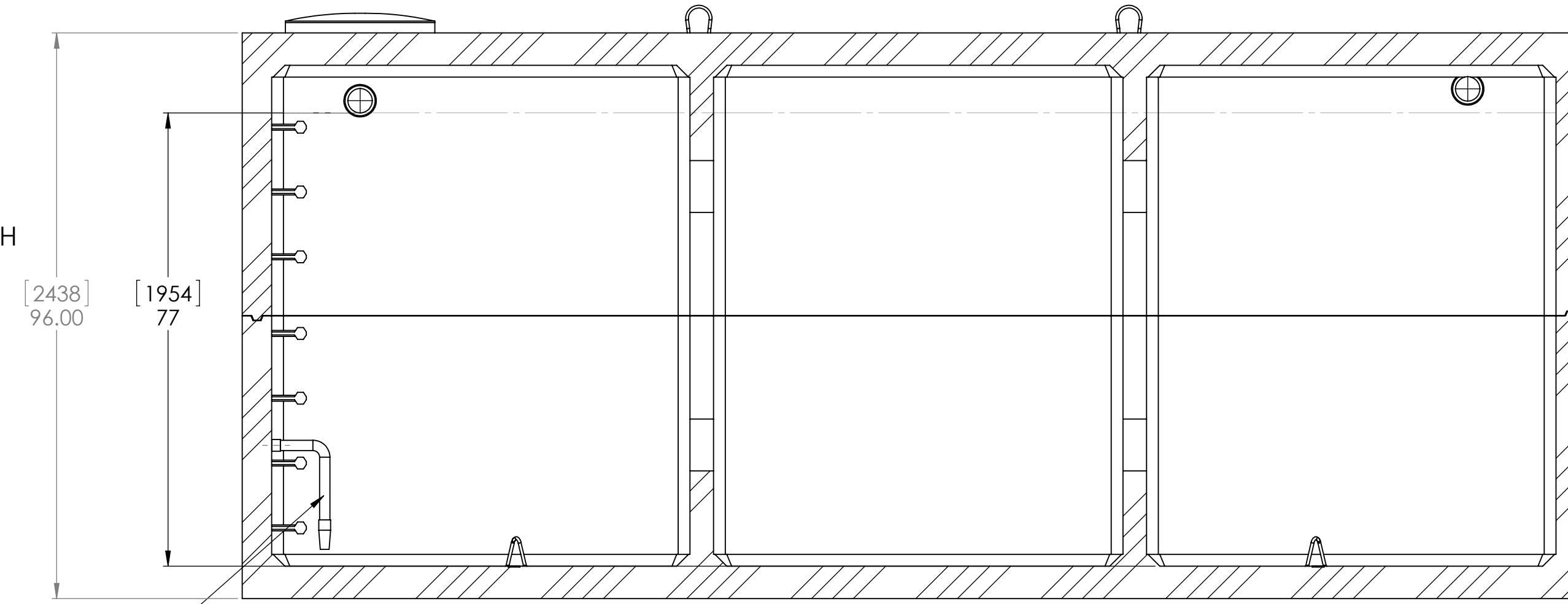
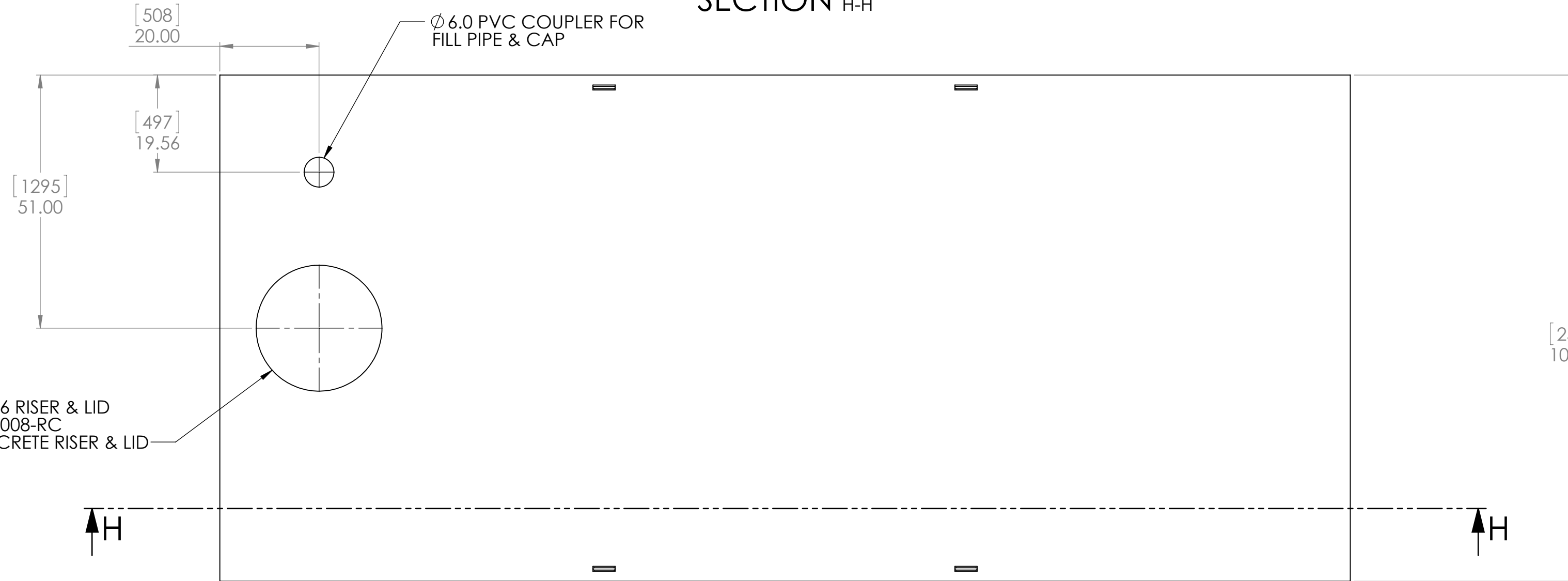


**NOTE:**  
 MATERIAL: CONCRETE 32MPa @ 28DAYS, NON-SULFATE  
 AIR ENTRAINMENT: 5-7%  
 REINFORCEMENT: CSA CAN A23.1  
 CONSTRUCTION: MEETS CSA B66-05  
 TOTAL WEIGHT: 20282 kg (44714 lbs)  
 TOTAL VOLUME: 27600 L (6068 Imp. Gal.)  
 SEPTIC CHAMBER VOLUME: N/A  
 EFFLUENT CHAMBER VOLUME: N/A  
 WORKING VOLUME: 25080 L (5517 Imp. Gal.) @ 77" LIQUID DEPTH  
 INLET/OUTLET: CAST-IN  $\phi$  102.00 ( $\phi$  4.00") PIPE SEAL  
 INLET BAFFLE:  $\phi$  102.00 ( $\phi$  4.00) PVC  
 OUTLET BAFFLE/FILTER: N/A  
 JOINT: MASTIC ROPE SEALANT  
 ASSEMBLY: ON-SITE  
 MAX. BURIAL DEPTH: 2M (78 INCHES)  
 DIMENSIONS: INCHES/MM



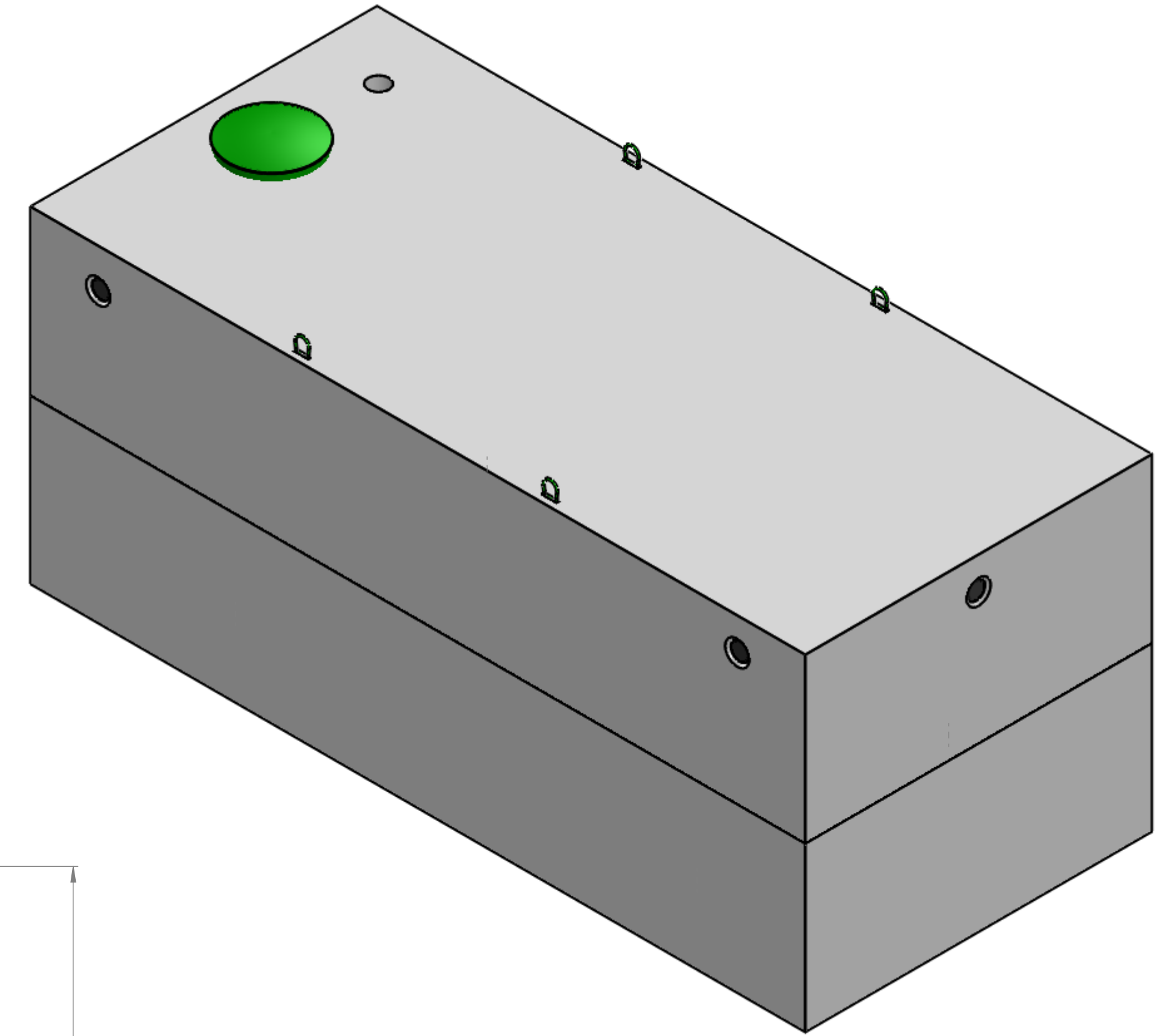
$\phi$  1.25 PVC/BRASS DRAW TUBE & FOOT VALVE ASSEMBLY

SECTION H-H

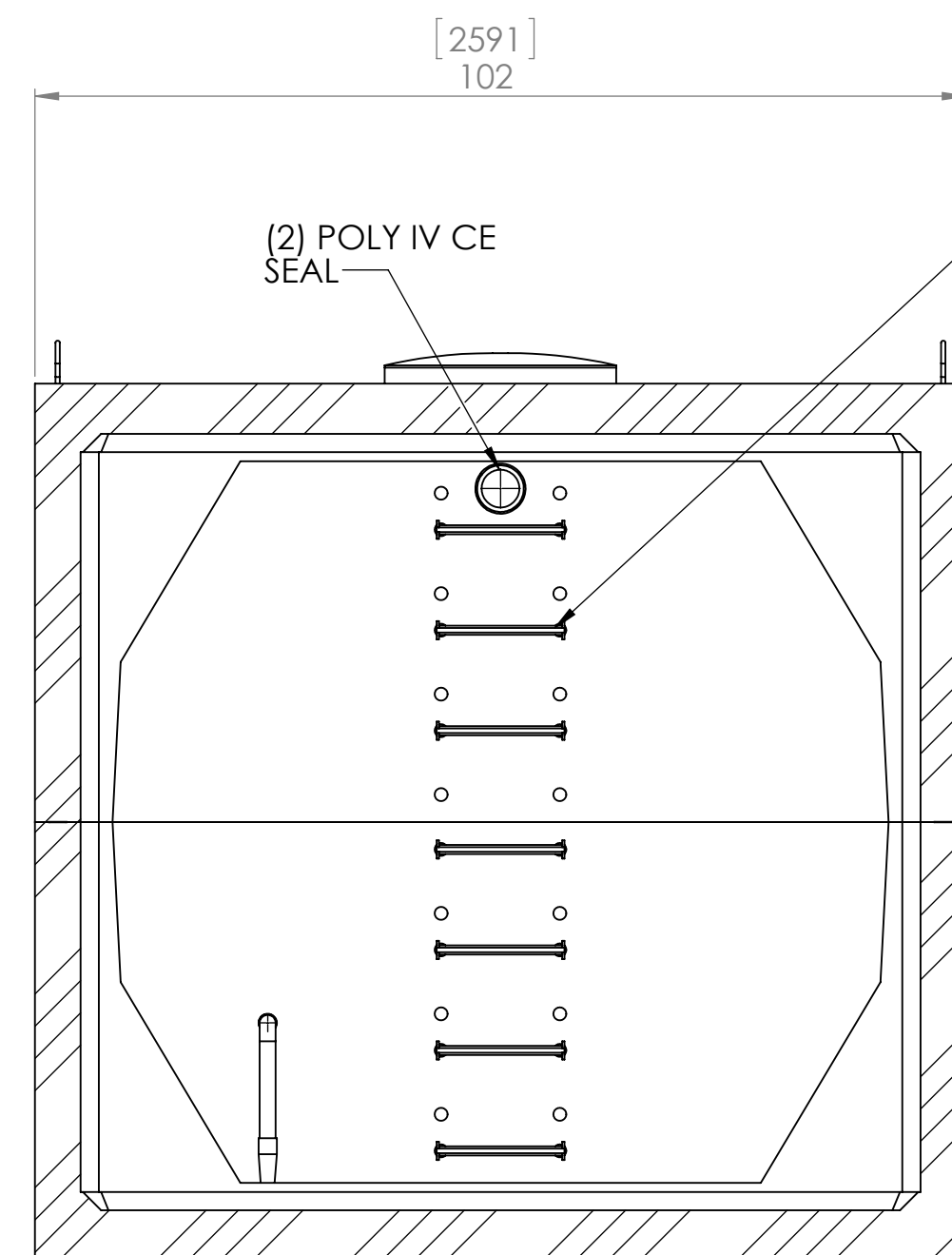


$\phi$  6.0 PVC COUPLER FOR FILL PIPE & CAP

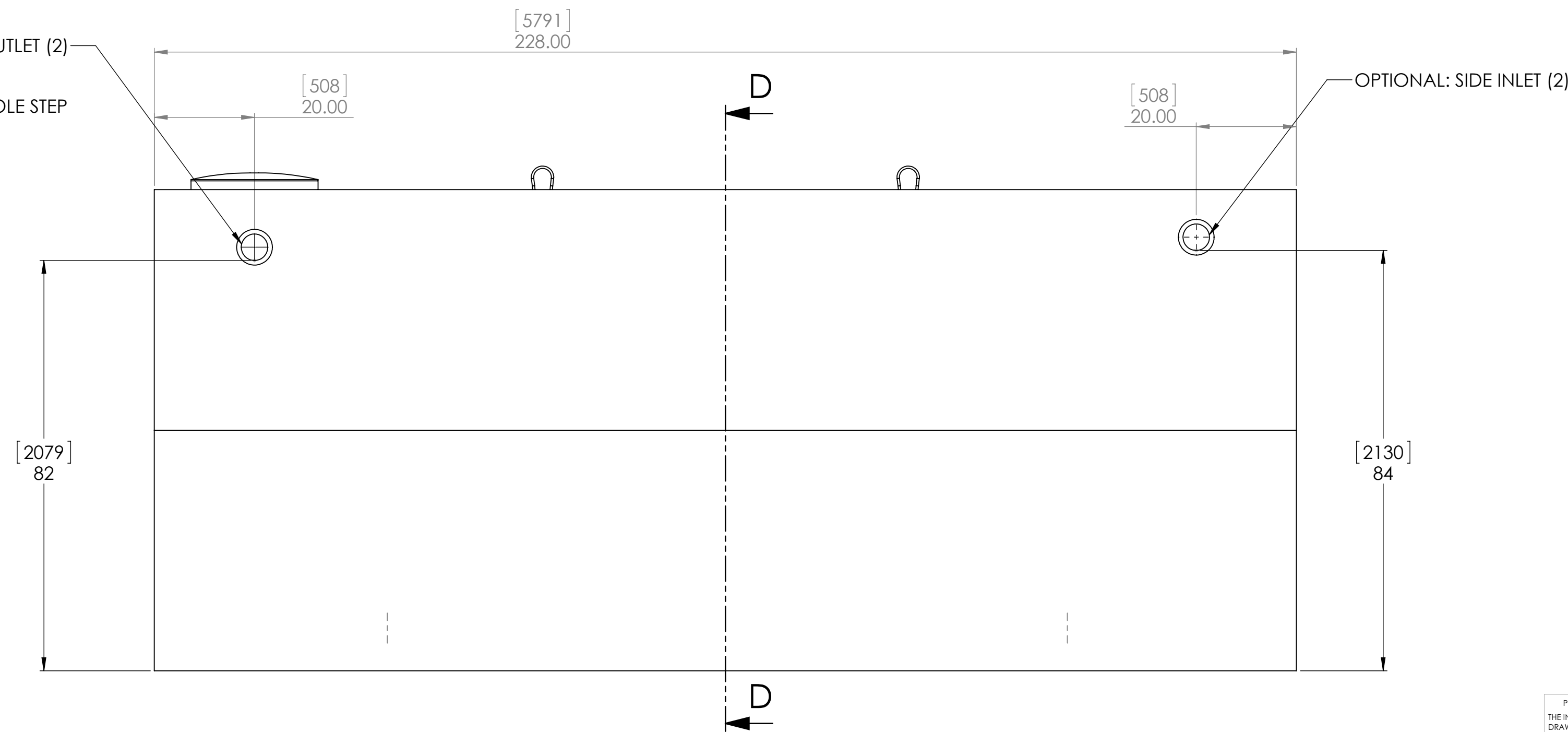
POLYLOK  $\phi$  24 X 6 RISER & LID PART NO. 3008, 3008-RC  
 OPTIONAL: CONCRETE RISER & LID



SCALE 1 : 25



OPTIONAL SIDE OUTLET (2)  
 OPTIONAL PS2-PF-DF MANHOLE STEP MA INDUSTRIES



OPTIONAL: SIDE INLET (2)

SECTION D-D

PROPRIETARY AND CONFIDENTIAL  
 THE INFORMATION CONTAINED IN THIS DRAWING IS THE SOLE PROPERTY OF  
 <INSERT COMPANY NAME HERE>. ANY  
 REPRODUCTION IN PART OR AS A WHOLE  
 WITHOUT THE WRITTEN PERMISSION OF  
 <INSERT COMPANY NAME HERE> IS  
 PROHIBITED.

UNLESS OTHERWISE SPECIFIED:		NAME	DATE	REID'S PRECAST CEMENT PRODUCTS LTD LANGTON, ONTARIO, CANADA 519 875-2121
DIMENSIONS ARE IN INCHES	DRAWN			
TOLERANCES:	CHECKED			
FRACTIONAL $\pm$	ENG APPR.			
ANGULAR MATCH $\pm$	MFG APPR.			TITLE:
BEND $\pm$	G.A.			6000 IMP. GALLON WATER CISTERN & HOLDING TANK
TWO PLACE DECIMAL $\pm$	COMMENTS:			SIZE DWG. NO.
THREE PLACE DECIMAL $\pm$				D RP-6000-C
INTERPRET GEOMETRIC TOLERANCING PER:				REV
MATERIAL				A
	NEXT ASSY	USED ON	FINISH	SCALE: 1:20
				WEIGHT:
				SHEET 1 OF 1