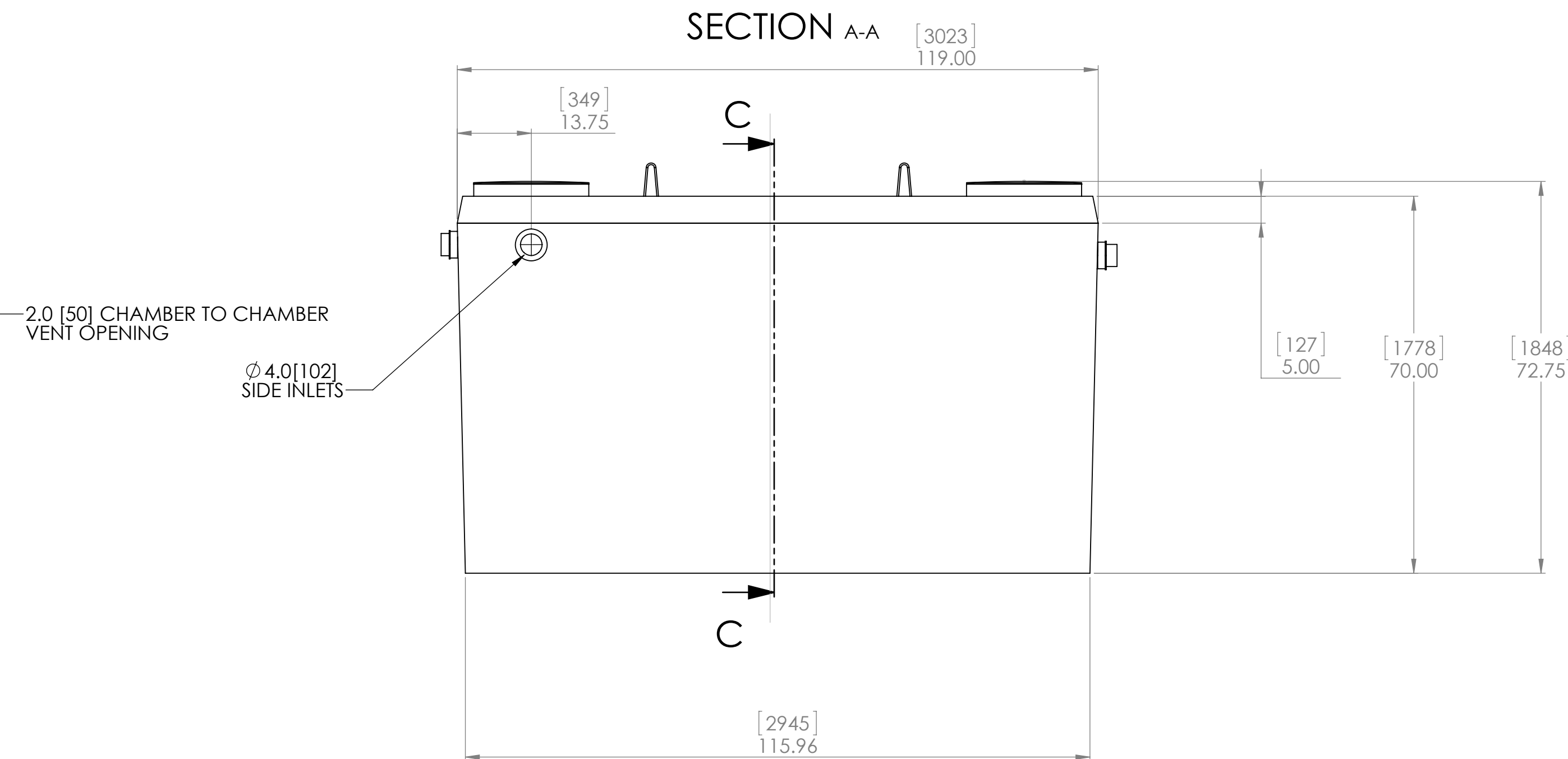
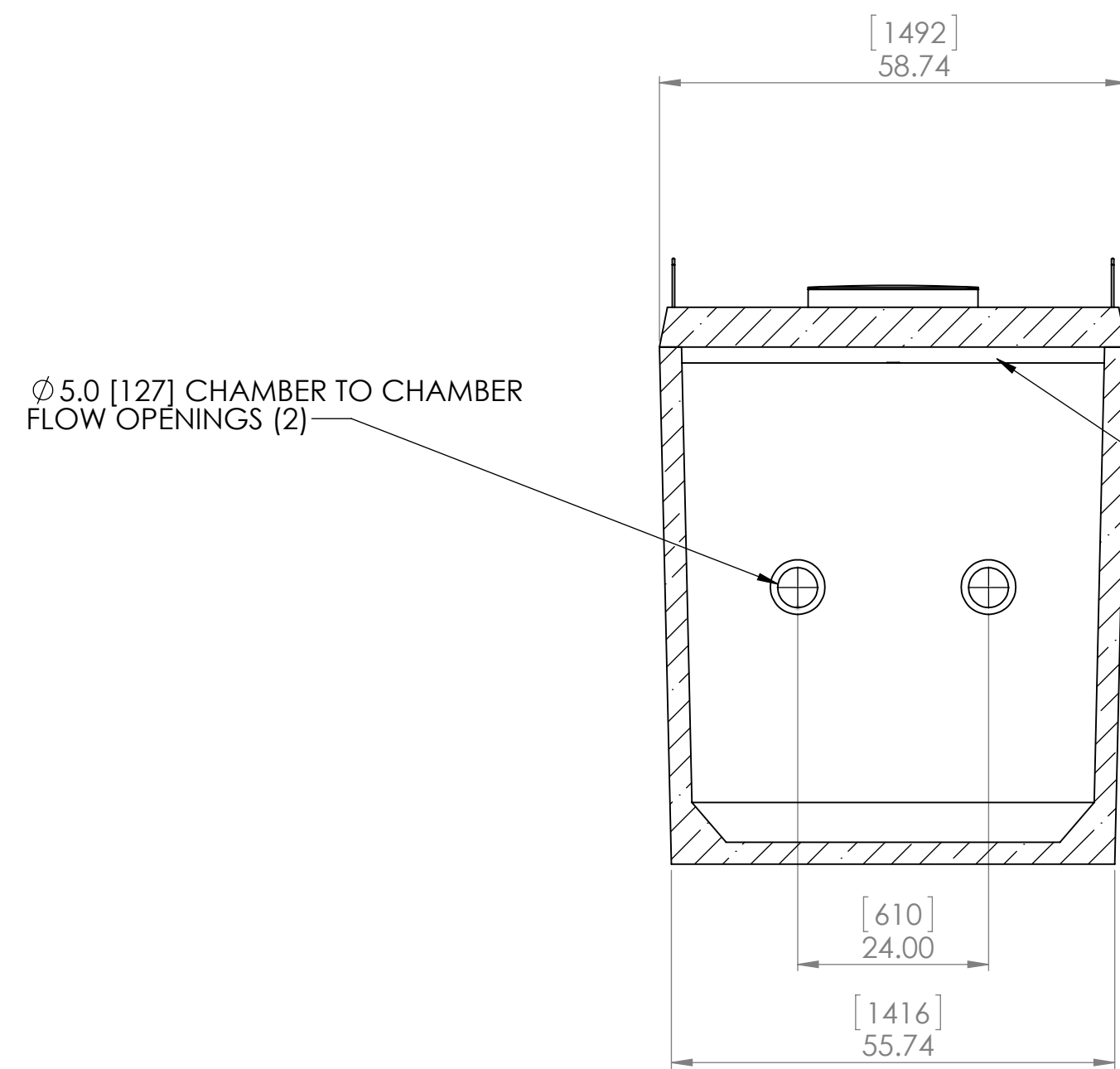
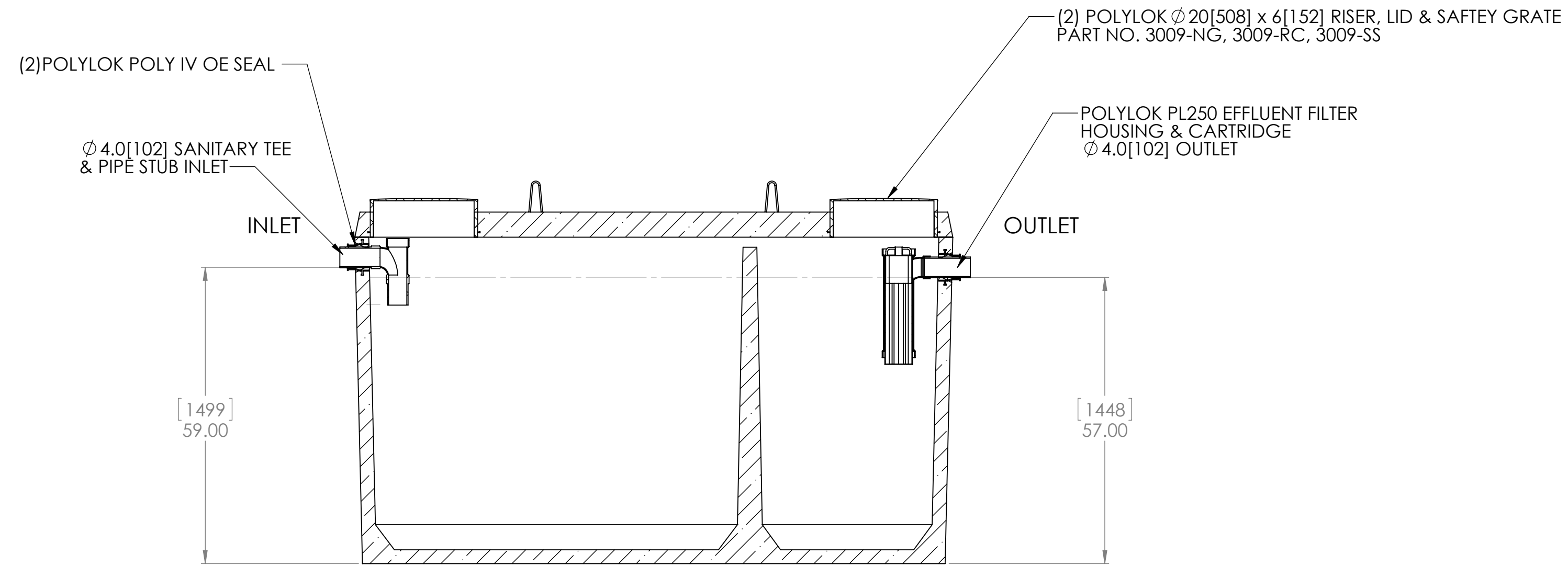
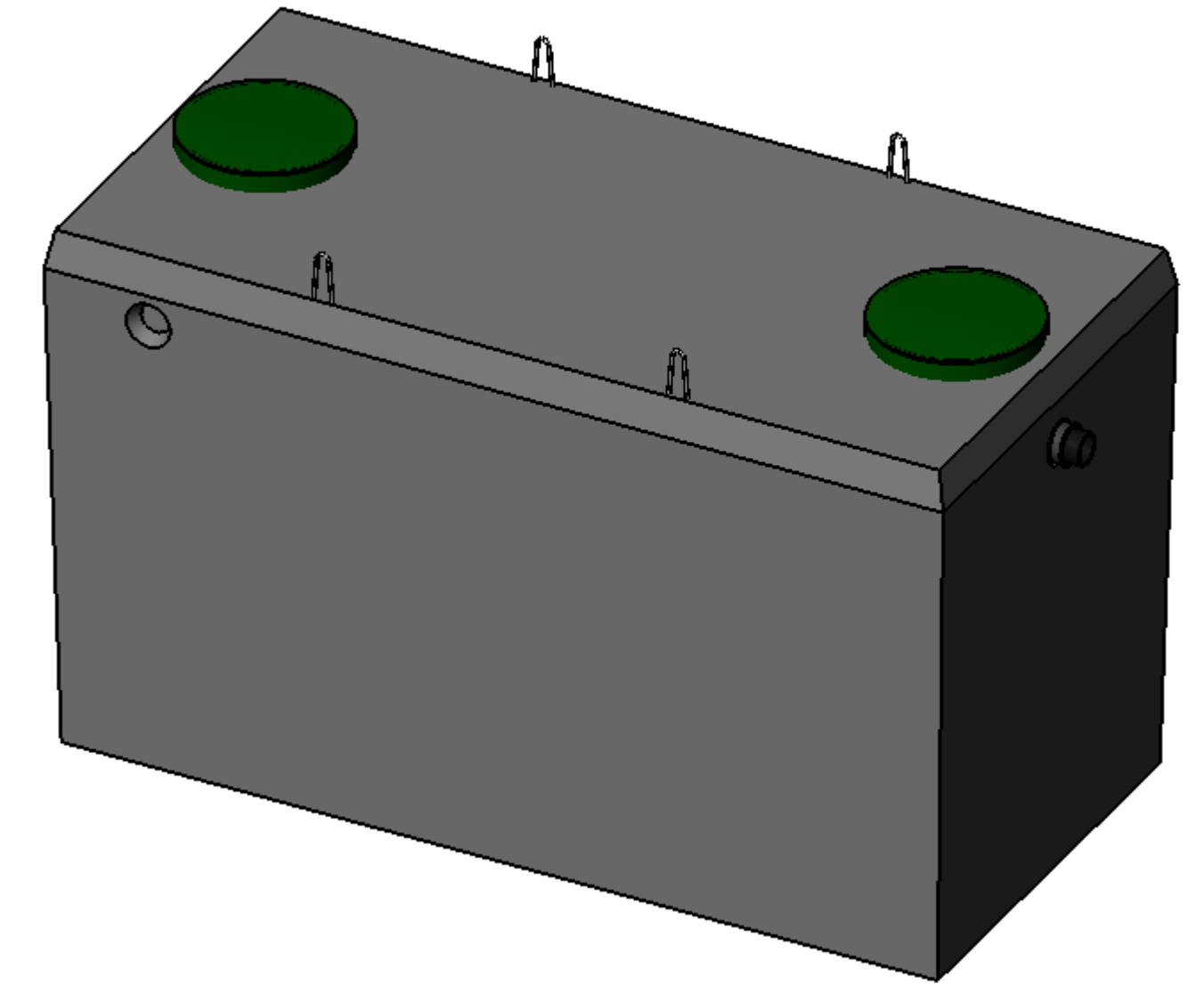
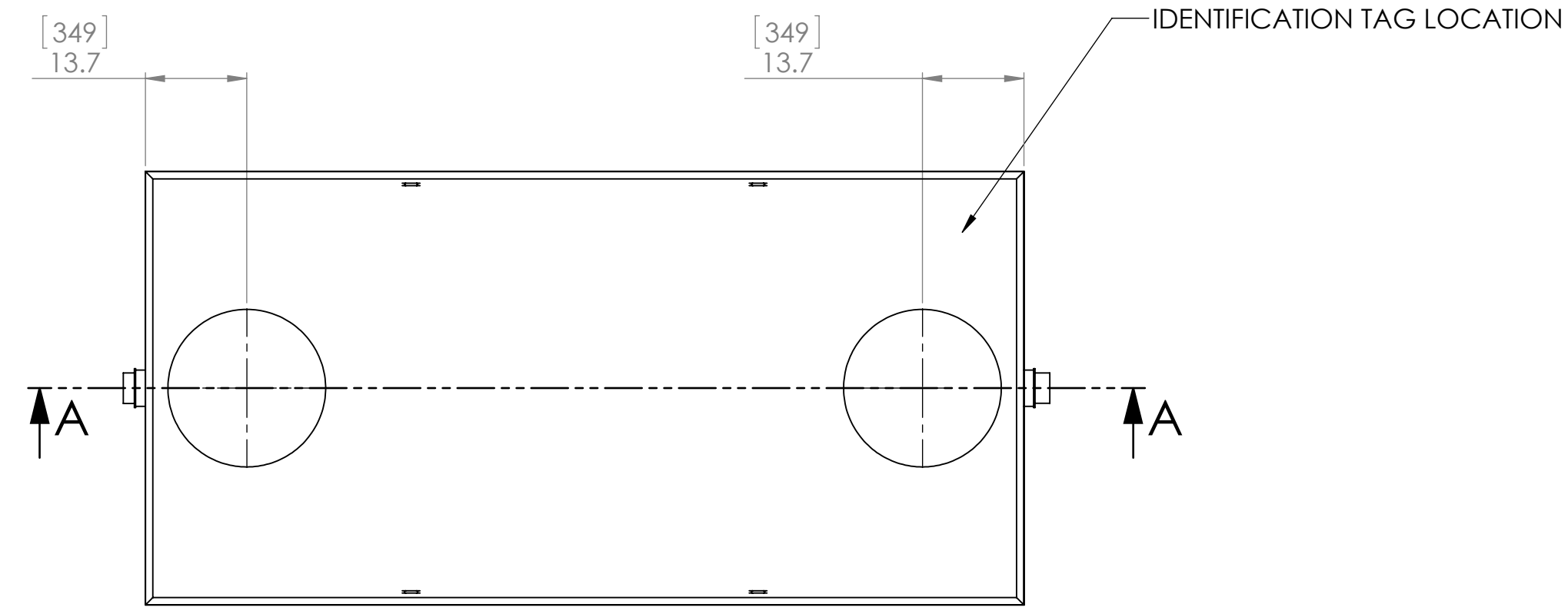


NOTE:
 MATERIAL: CONCRETE 35MPa @ 28DAYS, NON-SULFATE
 CONSTRUCTION: MEETS CSA B66-21
 TOTAL WEIGHT: 4805 kg (10593 lbs)
 WORKING VOLUME: 4812 L (1058 Imp. Gal.)
 MONOLITHIC CAST CHAMBER DIVIDER
 INLET/OUTLET: CAST-IN ϕ 105.00 (ϕ 4.00") PIPE SEAL
 INLET BAFFLE: ϕ 105.00 (ϕ 4.00) PVC
 OUTLET BAFFLE/FILTER: POLYLOK PL250 OR EQUIVALENT
 JOINT: N/A
 ASSEMBLY: N/A
 MAX. BURIAL DEPTH: 1.2M (48 INCHES)
 DIMENSIONS: INCHES [MM]



SECTION C-C

PROPRIETARY AND CONFIDENTIAL
 THE INFORMATION CONTAINED IN THIS
 DRAWING IS THE SOLE PROPERTY OF
 REID'S PRECAST CEMENT PRODUCTS LTD.
 REPRODUCTION IN PART OR AS A WHOLE
 WITHOUT THE WRITTEN PERMISSION OF
 REID'S PRECAST CEMENT PRODUCTS LTD.
 IS PROHIBITED.

UNLESS OTHERWISE SPECIFIED:		NAME	DATE	REID'S PRECAST CEMENT PRODUCTS LTD LANGTON, ONTARIO, CANADA 519 875-2121	
DRAWN					TITLE: 4500L (1000 IMP GAL) SEPTIC TANK
CHECKED					
ENG APPR.					
MFG APPR.					
INTERPRET GEOMETRIC TOLERANCING PER:		G.A.		SIZE DWG. NO. REV D ST4500L A	
MATERIAL		COMMENTS:			
NEXT ASSY	USED ON	FINISH			
APPLICATION				SCALE: 1:20/WEIGHT: SHEET 1 OF 1	