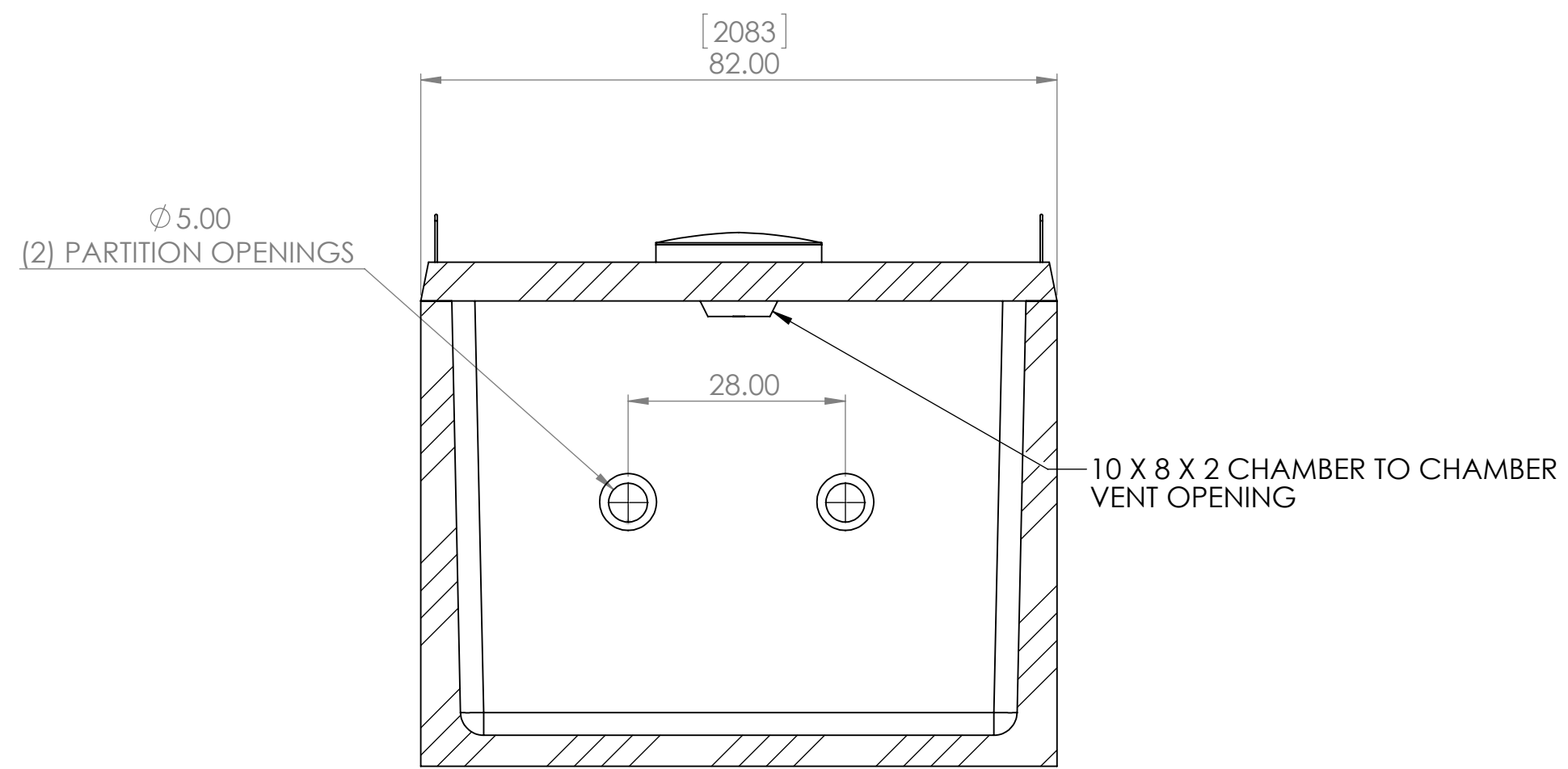
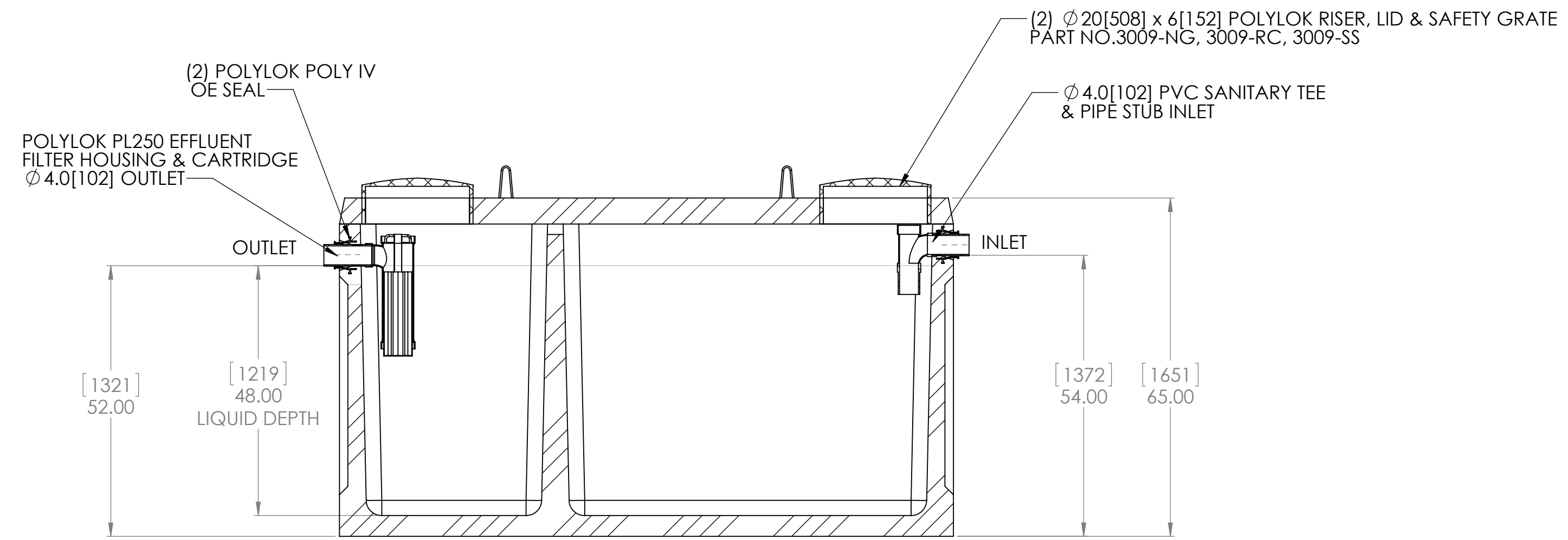
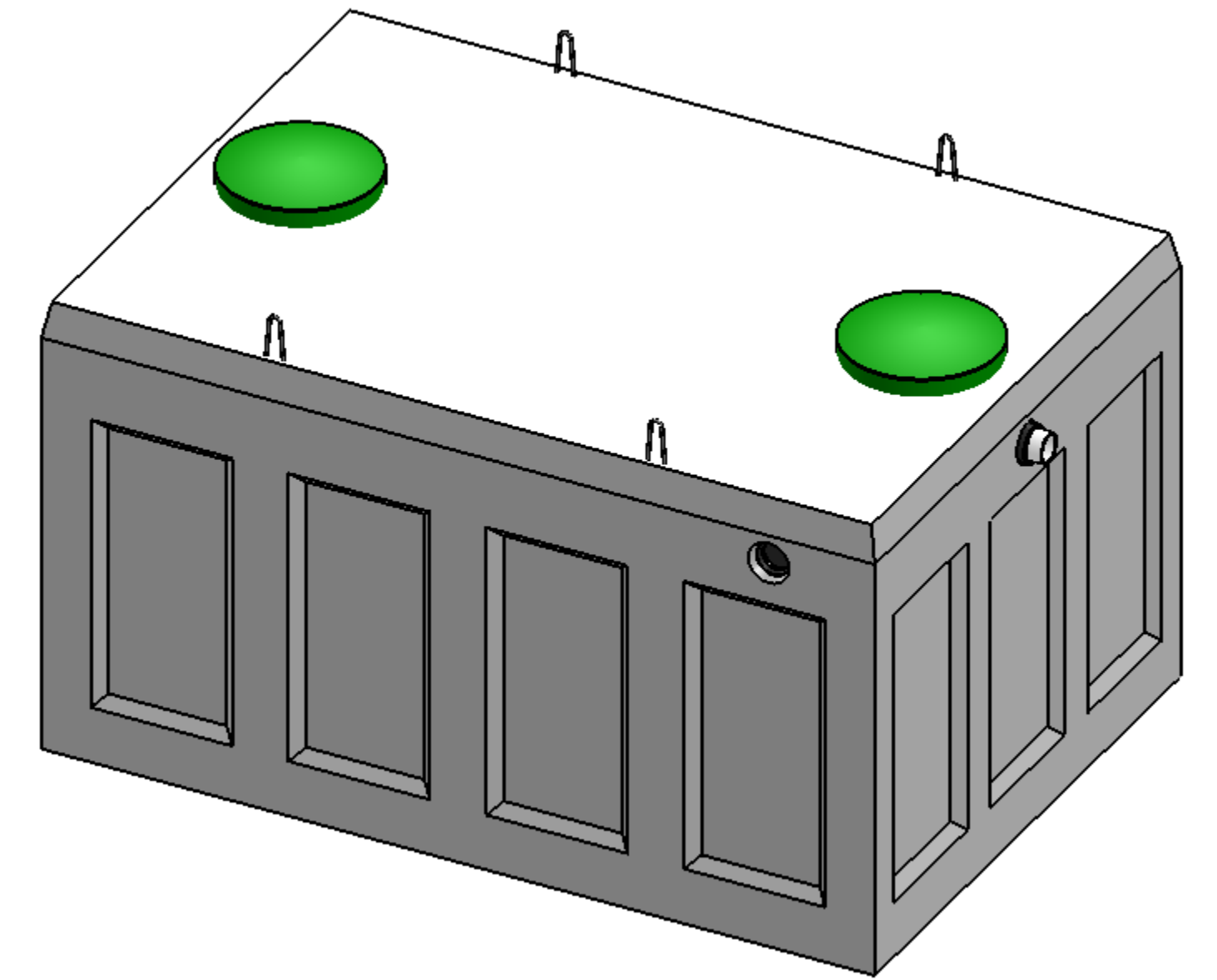
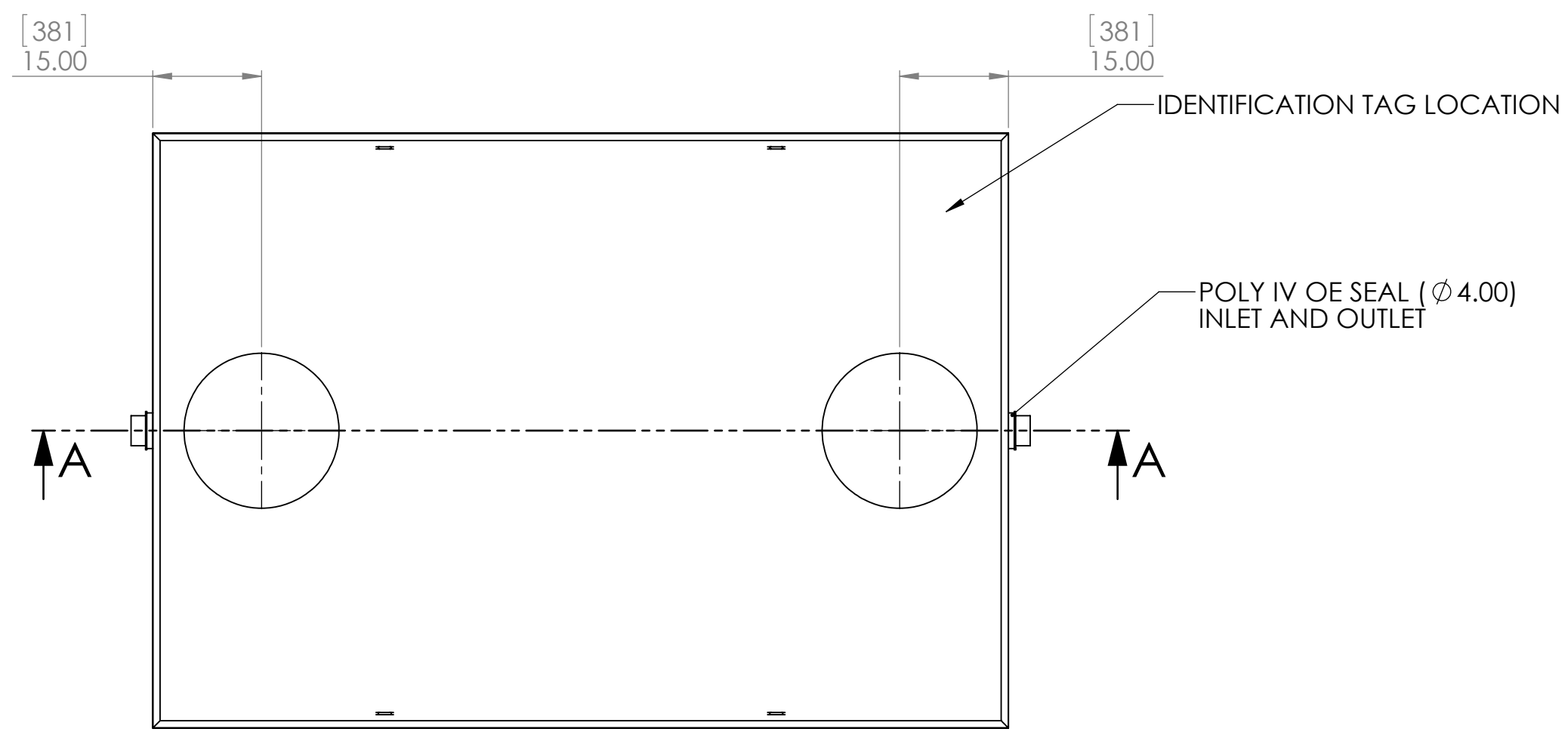
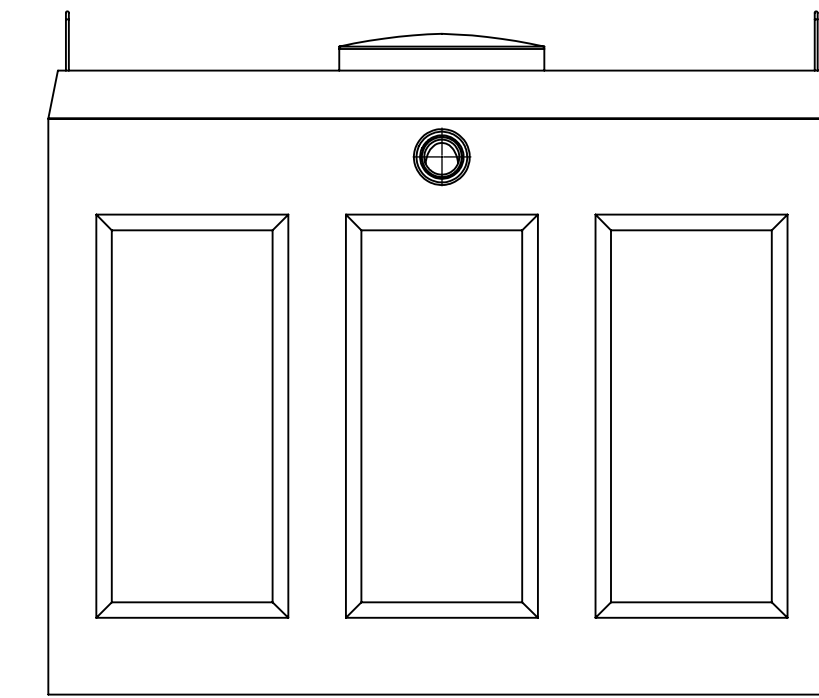
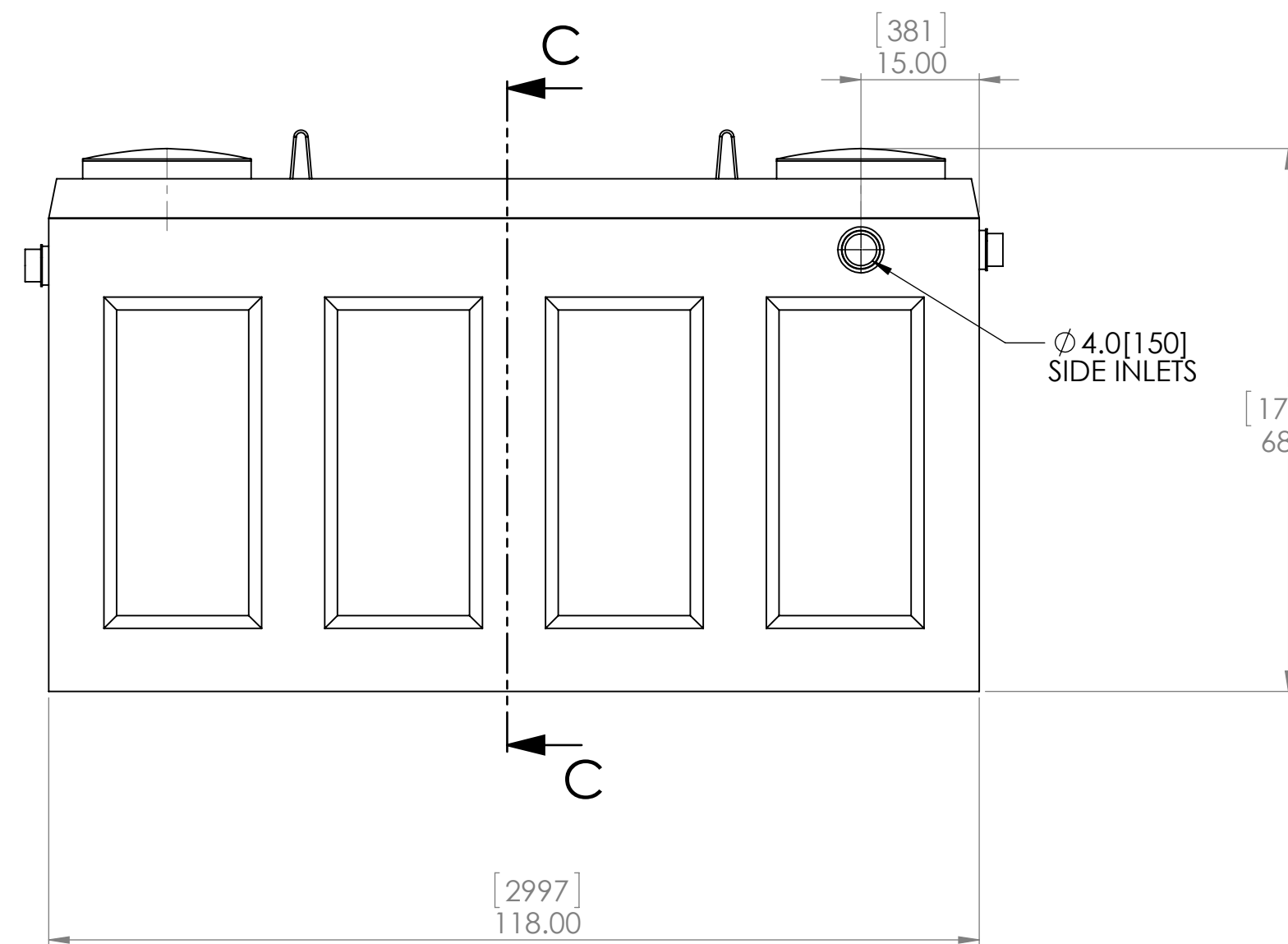


NOTE:
 MATERIAL: CONCRETE 35MPa @ 28DAYS, NON-SULFATE
 CONSTRUCTION: MEETS CSA B66-21
 TOTAL WEIGHT: 6807 kg (15008 lbs)
 WORKING VOLUME: 5930.2 L (1304.46 Imp. Gal.)
 MONOLITHIC CAST CHAMBER DIVIDER
 INLET/OUTLET: CAST-IN ϕ 102.00 (ϕ 4.00") PIPE SEAL
 INLET BAFFLE: ϕ 102.00 (ϕ 4.00) PVC
 OUTLET BAFFLE/FILTER: POLYLOK PL250 OR EQUIVALENT
 JOINT: N/A
 ASSEMBLY: N/A
 MAX. BURIAL DEPTH: 2M (78 INCHES)
 DIMENSIONS: INCHES[MM]



SECTION C-C

SECTION A-A



PROPRIETARY AND CONFIDENTIAL
 THE INFORMATION CONTAINED IN THIS
 DRAWING IS THE SOLE PROPERTY OF
 REID'S PRECAST CEMENT PRODUCTS LTD.
 REPRODUCTION IN PART OR AS A WHOLE
 WITHOUT THE WRITTEN PERMISSION OF
 REID'S PRECAST CEMENT PRODUCTS LTD.
 IS PROHIBITED.

UNLESS OTHERWISE SPECIFIED:		NAME	DATE	REID'S PRECAST CEMENT PRODUCTS LTD LANGTON, ONTARIO, CANADA 519 875-2121	
DRAWN					TITLE:
CHECKED					5900L (1300 IMP GAL) SEPTIC TANK
ENG APPR.					SIZE DWG. NO. REV D ST5900L A
MFG APPR.				SCALE: 1:20 WEIGHT: SHEET 1 OF 1	
Q.A.					
COMMENTS:					
INTERPRET GEOMETRIC TOLERANCING PER MATERIAL					
DIMENSIONS ARE IN INCHES TOLERANCES: FRACTIONAL: ANGULAR: MATCH: BEND: TWO PLACE DECIMAL: THREE PLACE DECIMAL: ±					
NEXT ASSY	USED ON	FINISH			
APPLICATION					